

INSTALLATION INSTRUCTIONS

Helix delta-T6 Conveyor Design Program Lite, Standard, Professional and Dynamic Versions

Issue Date: 16 April 2010
Program Version: 6.0.1
License Number: 5016-7965-606xx
License Holder: xxxxxxxx

Helix delta-T

... is a powerful tool for engineers and equipment suppliers to quickly and easily design and optimise belt conveyors for bulk materials handling. You can produce economically and technically sound conveyor system designs in a very short time.

Helix Technologies Pty Ltd
ACN 074 844 303



PO Box 610, Morley, WA 6943
Perth, Australia
Tel: +61 8 9275 0635
Fax: +61 8 9275 0615
email: sales@helixtech.com.au
web: <http://www.helixtech.com.au>

www.helixtech.com.au

INSTALLATION INSTRUCTIONS

System Requirements

To run the Helix delta-T6 program you need the following:

- Personal computer which can run Windows XP or later.
- Microsoft Windows XP, Windows Vista or Windows 7
- 32bit or 64bit operating system
- Microsoft .Net 3.5 software or later (supplied as part of Windows OS)
- 512 Mb of RAM or more. For the Dynamic Analysis version at least 1 GB RAM is recommended.
- 175 Mb of Hard Disk space.
- CD ROM disk drive or Internet Connection for installing software.
- USB port.
- 1360 x 768 or better resolution VGA monitor.
- Printers and networks supported by Windows or later (Optional).
- Mouse, keyboard

The program is supplied in one of the following file formats:

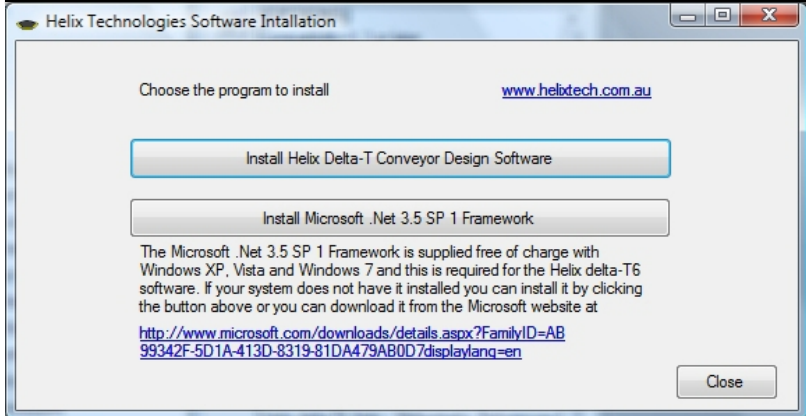
- A. Internet Download
- B. CD ROM disk – Run the HelixCDInstaller.exe program
- C. Memory Stick Flash Drive – Run the HelixCDInstaller.exe program

CD ROM Disk Installation and Flash Drive Installation

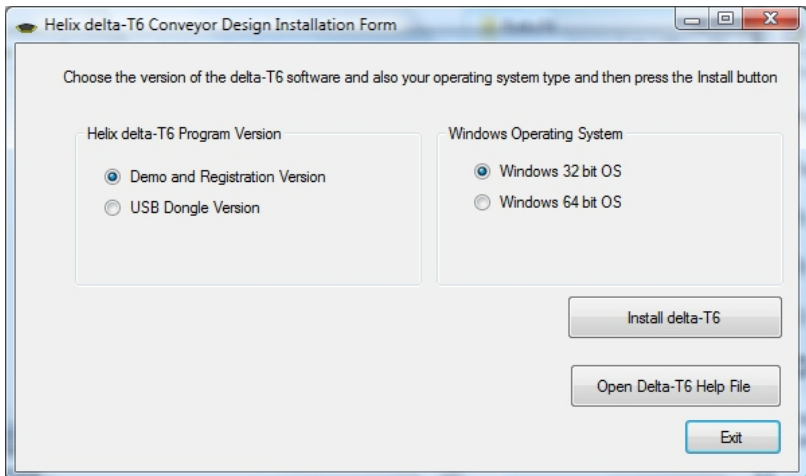
Insert the CD ROM in your CD-ROM drive (or the Flash Drive in a USB port), usually designated D: drive. The Autorun program should start automatically. If it doesn't start automatically open Windows Explorer and navigate to the CD ROM drive. In the main root directory look for an application file called

HelixCDInstaller.exe and double click to start it. The main form of the installer looks similar to the following

INSTALLATION INSTRUCTIONS

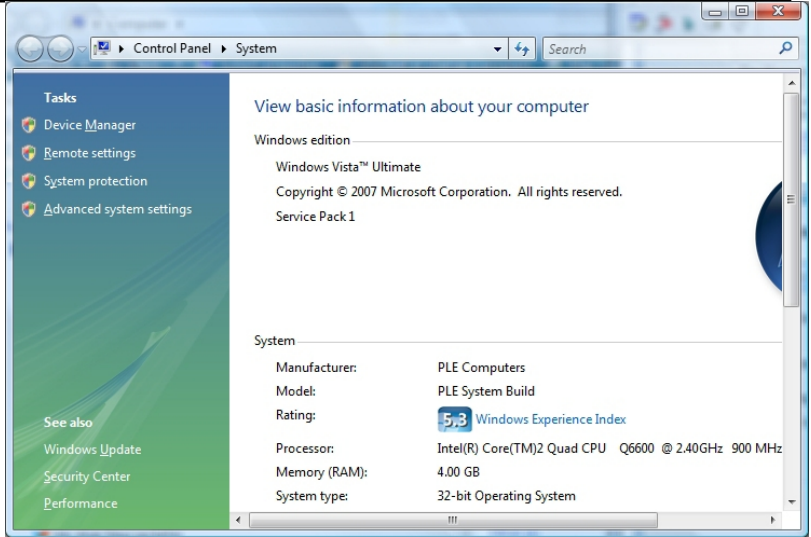


Click the '**Install Helix Delta-T Conveyor Design Software**' button to display the conveyor installation form.



- Choose the Version of the Program, e.g. Demo & Registration version or USB Dongle version.
- Choose your Windows Operating System e.g. Windows 32 bit or 64 bit. To check your system right click on Computer and choose Properties menu to display your PC details and operating system. It should state whether it is 32 or 64 bit as per sample below.

INSTALLATION INSTRUCTIONS



- Press the **Install delta-T6** button - the setup program will start.
- Follow the Setup instructions. If you are installing the DBRZI Dongle version, the Aladdin Dongle Device Driver installation will also be run. (look for it on the Windows task bar)
- For the Flash Drive dongle there is no extra device driver required.
- The installation program will inform you when the installation is finished.

Installing the Dongle (if applicable):

After installing the files described above, you need to install the Dongle on a USB port on your computer. Simply plug it into a USB port on your computer. Please wait for Windows to recognize the USB Flash Drive; it may take a few moments.

The USB dongle supplied with the program is unique to your license and is your key to using the software. We recommend that you insure the USB key on your office insurance policy as we cannot replace a lost or missing dongle without the purchase of a new software license. Helix will replace a damaged or faulty dongle as a service exchange but the faulty dongle must be returned to Helix in exchange for the replacement.

INSTALLATION INSTRUCTIONS

After completing the installation the program icon and shortcut will be on your Desktop and also in the Programs list under Helix. To run the program double click the desktop icon. Remember to read the **Getting Started** section of the Help file.

On-line Registration version Installation

This version is not supplied with a dongle. You need to install the program then run it to generate your system information. Email this system information to sales@helixtech.com.au to obtain a Registration code to unlock the program. If you do not register the program it can be used in Demonstration mode. Please download the software from the link provided when you purchase the software.

- Save the HelixDeltaT6xxx.zip to a temporary directory on the computer.
- Extract the files from the zip file. The zip file contains two files, Setup.exe and HelixDeltaT6xxxx.msi
- Run the Setup.exe program to install the program - follow the on-screen instructions.
- Once the program is installed, you will see the program listed in Start, Programs section and on the Windows desktop there will be shortcut to the program called "Helix delta-T6 Conveyor Design"
- Run the Helix delta-T6 Program
- A software Registration form will be displayed.



- Press the "Send email request for Registration" button. This will open your default email program. Add your contact details and

INSTALLATION INSTRUCTIONS

company name to the bottom of the email and send the email to us.

- You can then press OK button to continue and use the evaluation version of the program to explore the program and help file whilst waiting for a response to your registration request from Helix Technologies.
- Helix Technologies will respond with an email containing a Registration code.
- Restart the Helix delta-T6 program. The registration form will be displayed once more.
- Copy the Registration code from the email by highlighting it and then pressing Ctrl + C on your keyboard. Ensure that no extra characters or trailing spaces are copied.
- Then click in the License Key box in the registration form and press Ctrl+V to paste in the registration code. Ensure that no extra characters or trailing spaces are pasted.
- Press the OK button.
- The Helix delta-T6 program will start. The registration details will be displayed on the status bar at the bottom of the main form.
- The registration is complete. Press F1 for help on getting started.

Getting Started

Before you use delta-T we recommend that you print out and read the **Getting Started** section of the Help File. You can find this section in the Help File by selecting Help, Contents, Getting Started or just press F1. The program is supplied with a full electronic version of the instruction manual in the form of a help file. You can print all or portions of this help file if you require a paper copy.

Press F1 for help anywhere in the program.

If you need additional help, contact Helix by phone or at the email address supplied.